

Title: What causes an MPiec controller to post the "Duplicate LogicalInput IDs were detected" alarm?**Product(s):** MP3200iec, MP2300iec, MP2600iec,
MP3300iec, MotionWorks IEC**Doc. No.** PN.MPIEC.02**Product Overview**

This product note shows how the io.xml file can be corrected using the existing MotionWorks IEC program and the hardware configuration.

Creating a MotionWorks IEC v2 program offline with 2 axes generates an io.xml file within the C:\Users\user_name\Documents\MotionWorks IEC v2 Pro\file_name\C\Configuration\R\Resource\StartupFiles folder. Converting the MotionWorks IEC v2 program to MotionWorks IEC 3.3.0.209 and below and saving the Hardware Configuration will create the error.

Notes: Starting a blank project with MotionWorks IEC v3.x eliminates this issue.

Products Used

Component	Product and Model Number
Controller	MPiec Series Controller
Software	MotionWorks IEC 3.3.0.209 (and below) Pro and Express

Title: What causes an MPiec controller to post the "Duplicate LogicalInput IDs were detected" alarm?

Product(s): MP3200iec, MP2300iec, MP2600iec, MP3300iec, MotionWorks IEC

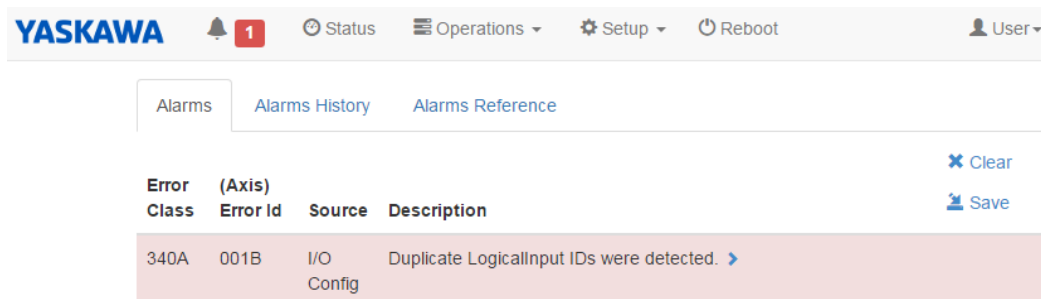
Doc. No. PN.MPIEC.02

Implementation

1. Login to MPiec Controller



2. Verify under the Alarms tab that the 'Duplicate LogicalInput IDs were detected' alarm is present

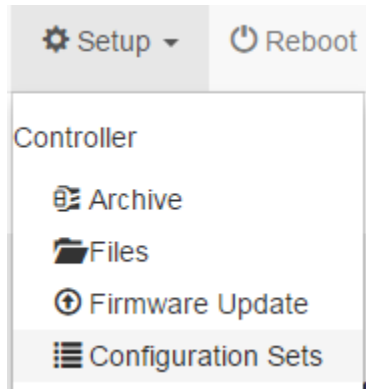


Title: What causes an MPiec controller to post the "Duplicate LogicalInput IDs were detected" alarm?

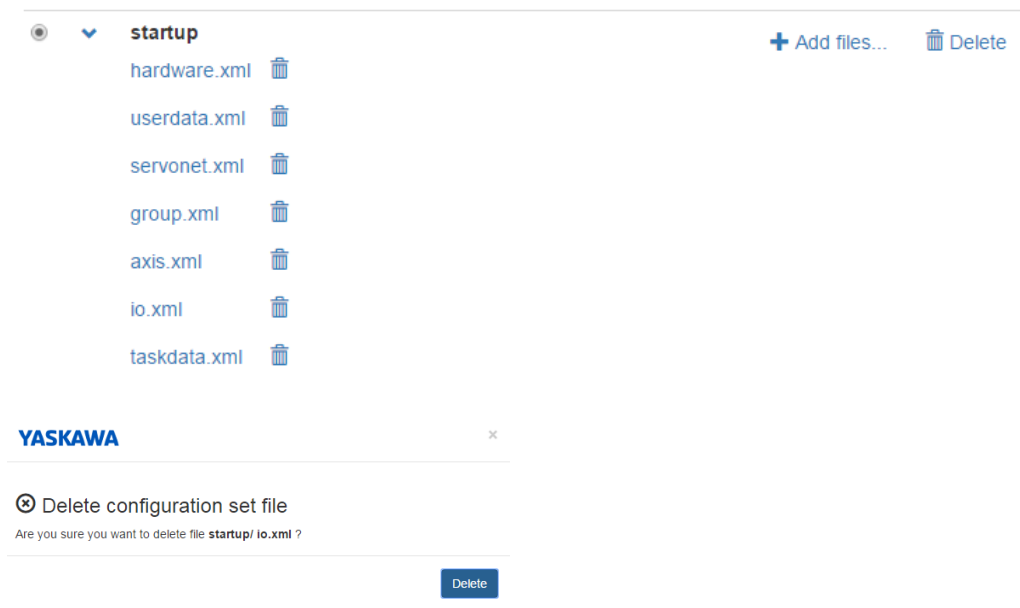
Product(s): MP3200iec, MP2300iec, MP2600iec, MP3300iec, MotionWorks IEC

Doc. No. PN.MPIEC.02

3. Navigate to Setup > Configuration Sets



4. Under the Startup Folder, click the trash can icon to delete the io.xml



5. Reboot Controller

Title: What causes an MPiec controller to post the "Duplicate LogicalInput IDs were detected" alarm?

Product(s): MP3200iec, MP2300iec, MP2600iec, MP3300iec, MotionWorks IEC

Doc. No. PN.MPIEC.02

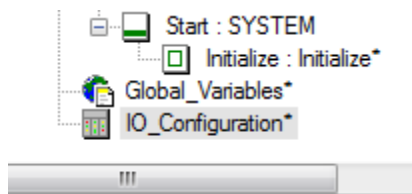
YASKAWA

Reboot

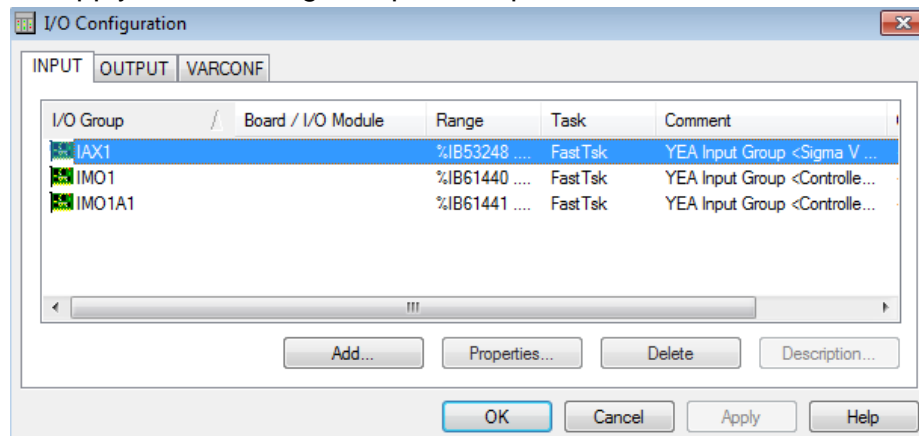
WARNING: Rebooting the controller will immediately stop all motion, servo off all drives, and stop all user programs. The controller will then reboot, which will end all network connections.

Reboot

- Open the MotionWorks IEC Project to use and navigate to the bottom of the Project Tree Window under 'IO_Configuration'



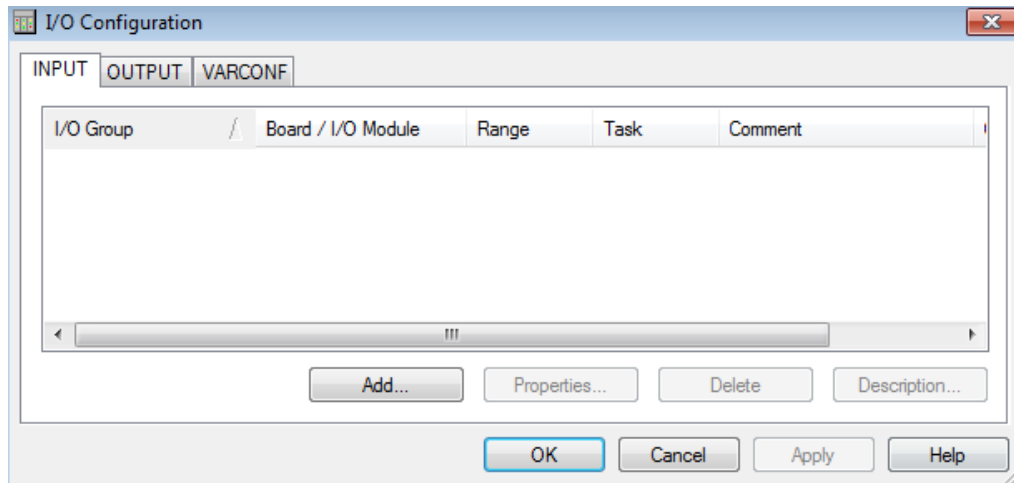
- Double-click IO_Configuration
- Delete ALL I/O Groups in the list for the INPUT Tab
Hit Apply after deleting all Input Groups



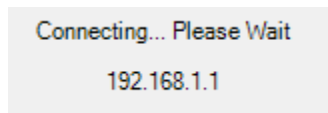
Title: What causes an MPiec controller to post the "Duplicate LogicalInput IDs were detected" alarm?

Product(s): MP3200iec, MP2300iec, MP2600iec,
MP3300iec, MotionWorks IEC

Doc. No. PN.MPIEC.02



9. Repeat Step 6 for the OUTPUT Tab
10. Click OK
11. Go to Hardware Configuration
12. Connect to Controller

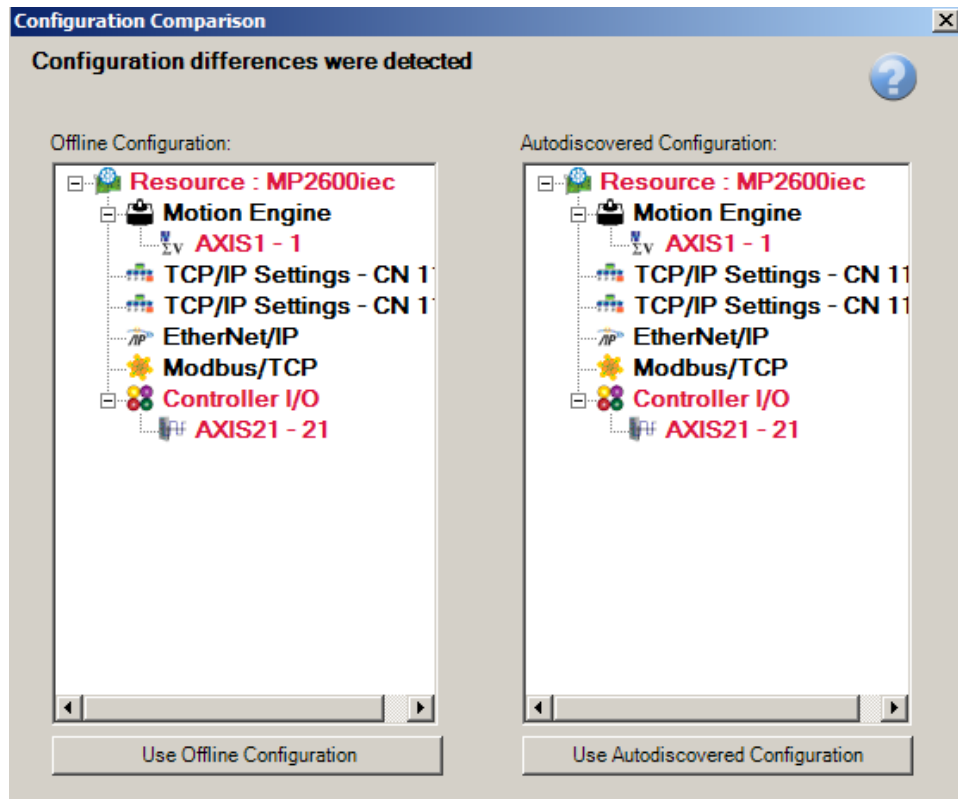


Title: What causes an MPiec controller to post the "Duplicate LogicalInput IDs were detected" alarm?

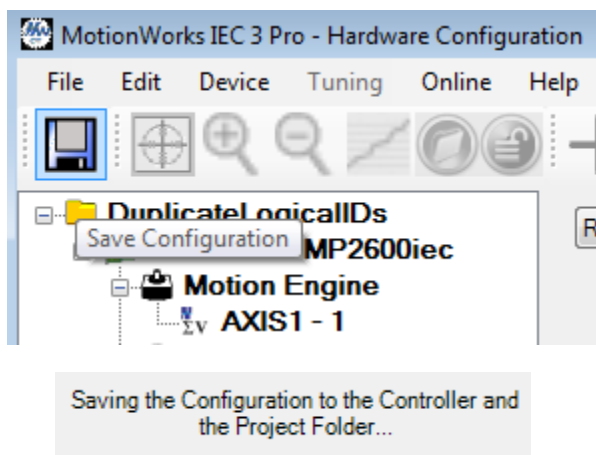
Product(s): MP3200iec, MP2300iec, MP2600iec, MP3300iec, MotionWorks IEC

Doc. No. PN.MPIEC.02

13. Use Offline Configuration



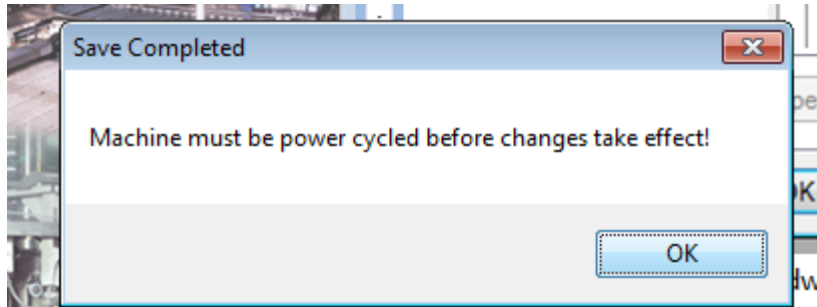
14. Save Configuration



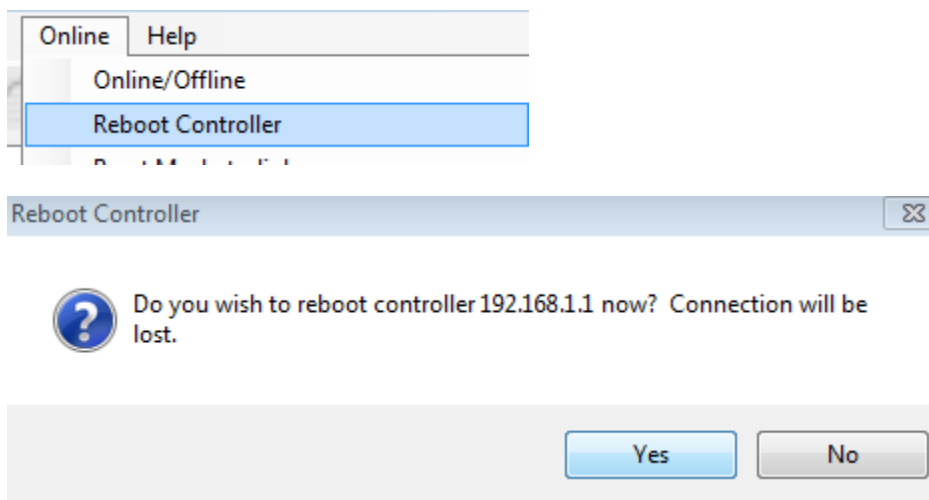
Title: What causes an MPiec controller to post the "Duplicate LogicalInput IDs were detected" alarm?

Product(s): MP3200iec, MP2300iec, MP2600iec,
MP3300iec, MotionWorks IEC

Doc. No. PN.MPIEC.02



15. Click 'Online' in the Menu Bar and Reboot the Controller



16. Close Hardware Configuration

Title: What causes an MPiec controller to post the "Duplicate LogicalInput IDs were detected" alarm?

Product(s): MP3200iec, MP2300iec, MP2600iec,
MP3300iec, MotionWorks IEC

Doc. No. PN.MPIEC.02

17. Go back to the Web Server and verify under the Configuration Sets Folder that the io.xml file was replaced



18. On the Alarms page, verify that the 'Duplicate LogicalInput IDs were detected' alarm is cleared

